



Colors & Materials 2024/2025

all models

*hull - exterior
gelcoat & painted*

FJORD 

gelcoat

painted



standard signal white

The hull can be painted in almost **every colour** (metallic / non metallic) according to the Alexseal Yacht Coatings Selection. Please ask your dealer.

all models

waterline – exterior
gelcoat & painted

FJORD 

gelcoat

painted



standard jet black

The waterline can be painted in almost every colour (metallic / non metallic) according to the Alexseal Yacht Coatings Selection. Please ask your dealer.

all models

dashboard - exterior
gelcoat & painted

FJORD 

gelcoat

painted



standard signal white

The steering can be painted in almost every colour (metallic / non metallic) according to the Alexseal Yacht Coatings Selection. Please ask your dealer.

all models

galley - exterior
gelcoat & painted

FJORD 

gelcoat



painted



The galley can be painted in almost every colour (metallic / non metallic) according to the Alexseal Yacht Coatings Selection. Please ask your dealer.

all models

t-top & coach roof - exterior
painted

FJORD 



standard 41 XL & 41 XP
standard 490 OPEN & 490 SPORT
standard 53 XL
option 39 XL & 39 XP signal white

All models
The T-Top can be painted in almost
every colour (metallic / non metallic)
according to the Alexseal Yacht Coatings
Selection. Please ask your dealer.

option all models

flooring - exterior
Real teak



Real teak

standard all models

flooring - exterior
synthetic teak



Classic Teak Black

Classic Teak Grey

Classic Teak White

Blue Water Teak Black

Blue Water Teak White

Grinded Teak Black

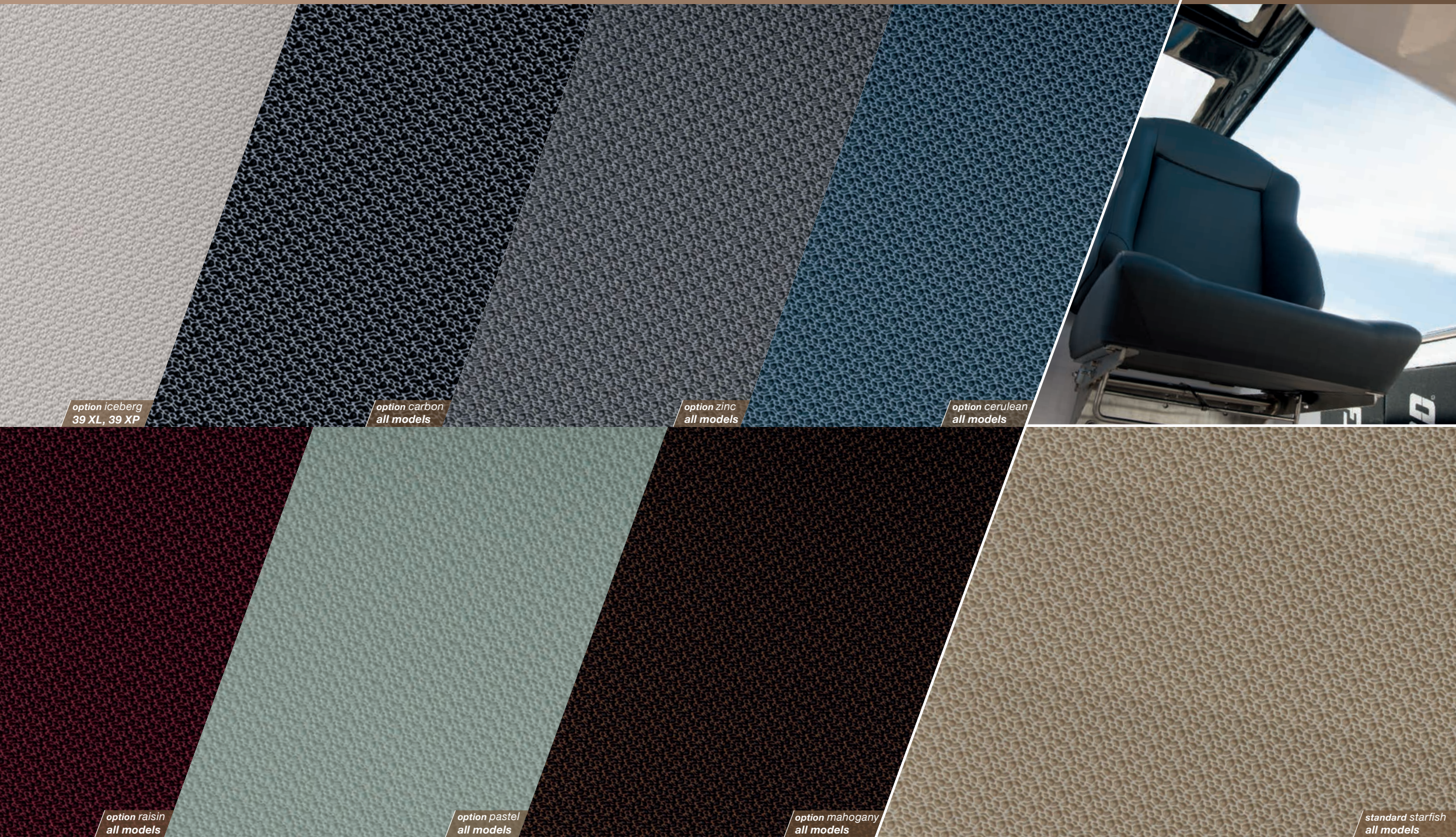
Grinded Teak Grey

Grinded Teak White

*upholstery and helmsman seats - exterior
hitch*



all models



*option iceberg
39 XL, 39 XP*

*option carbon
all models*

*option zinc
all models*

*option cerulean
all models*

*option raisin
all models*

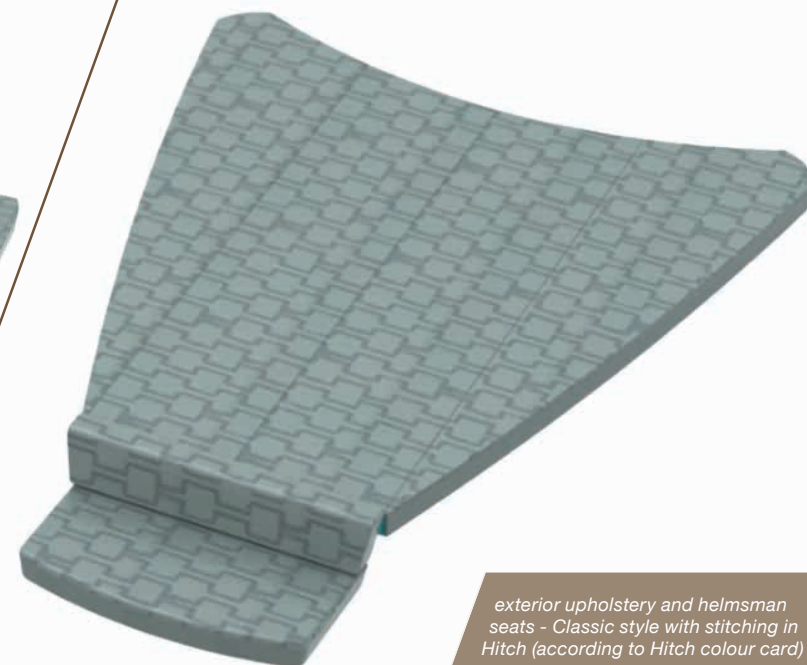
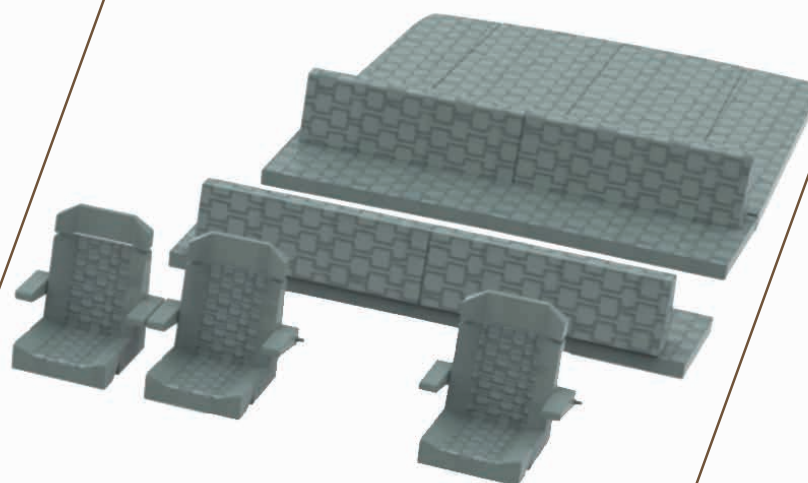
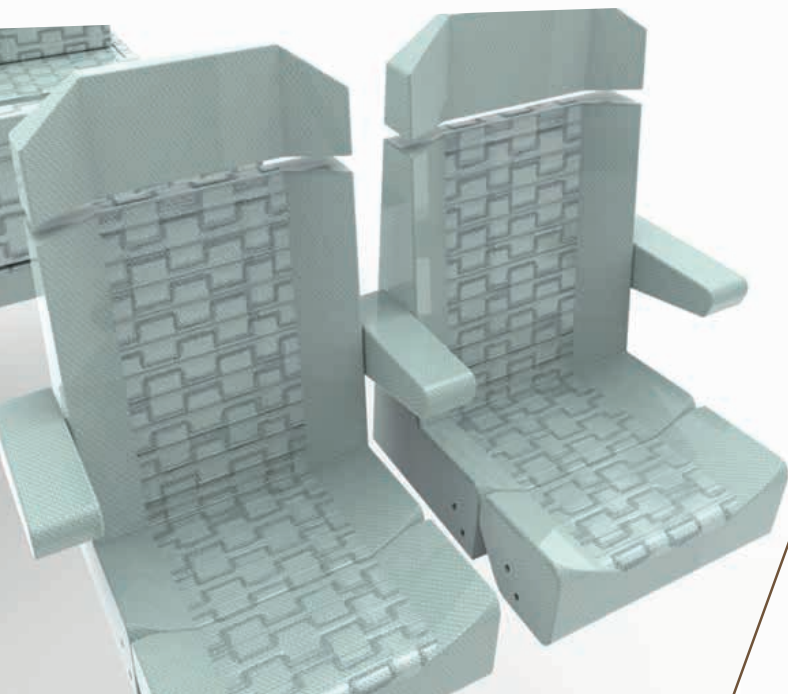
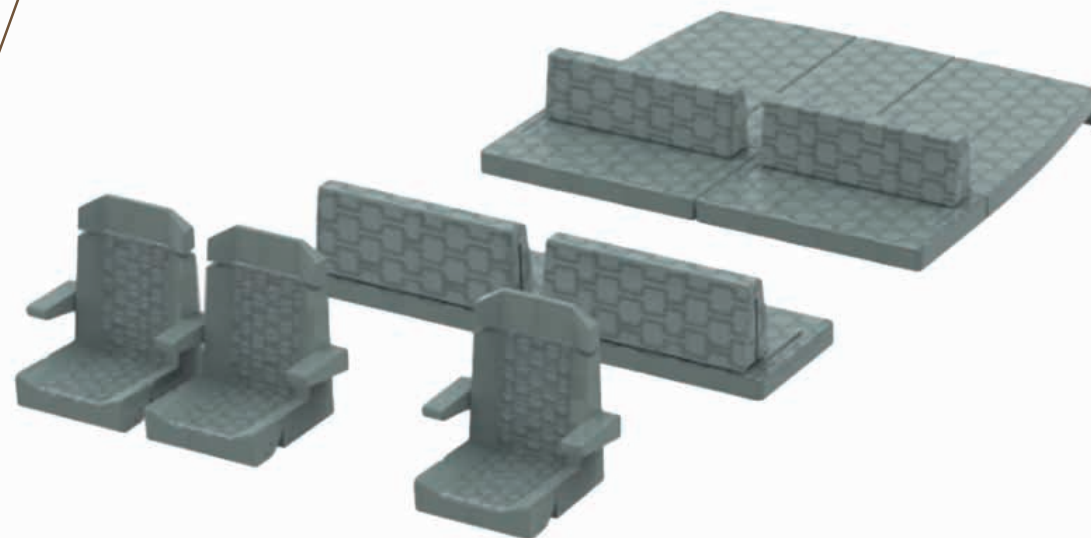
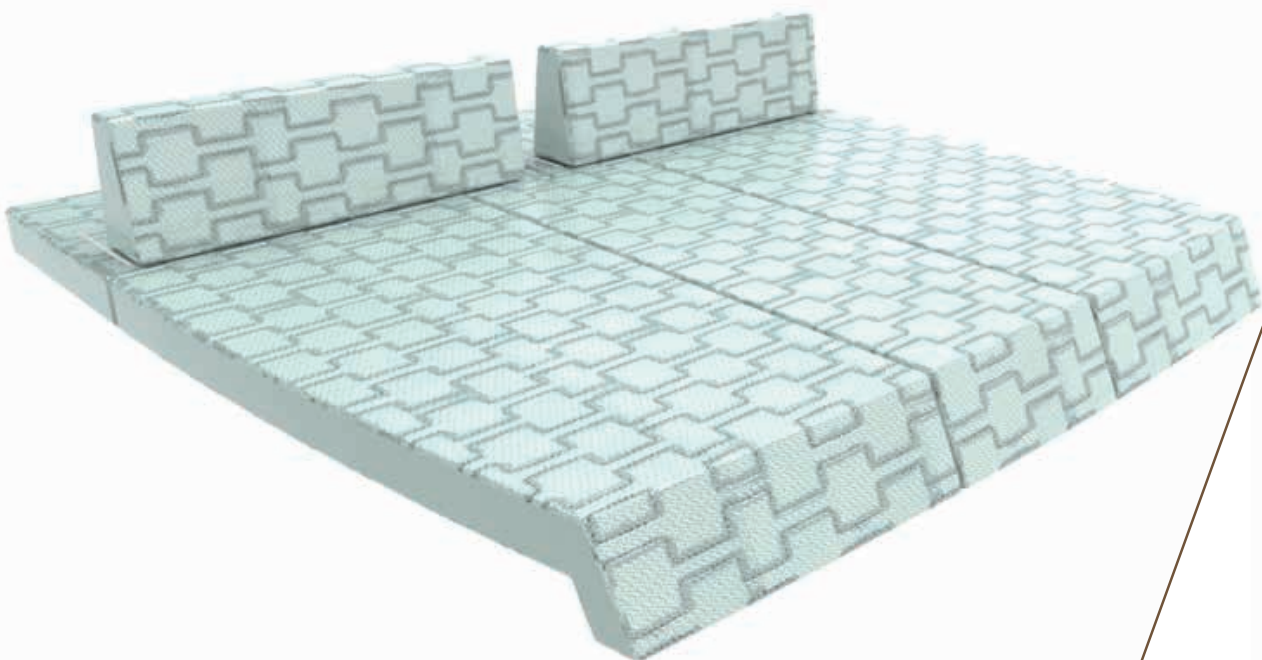
*option pastel
all models*

*option mahogany
all models*

*standard starfish
all models*

all models

*upholstery and helmsman seats - exterior
hitch - classic style*

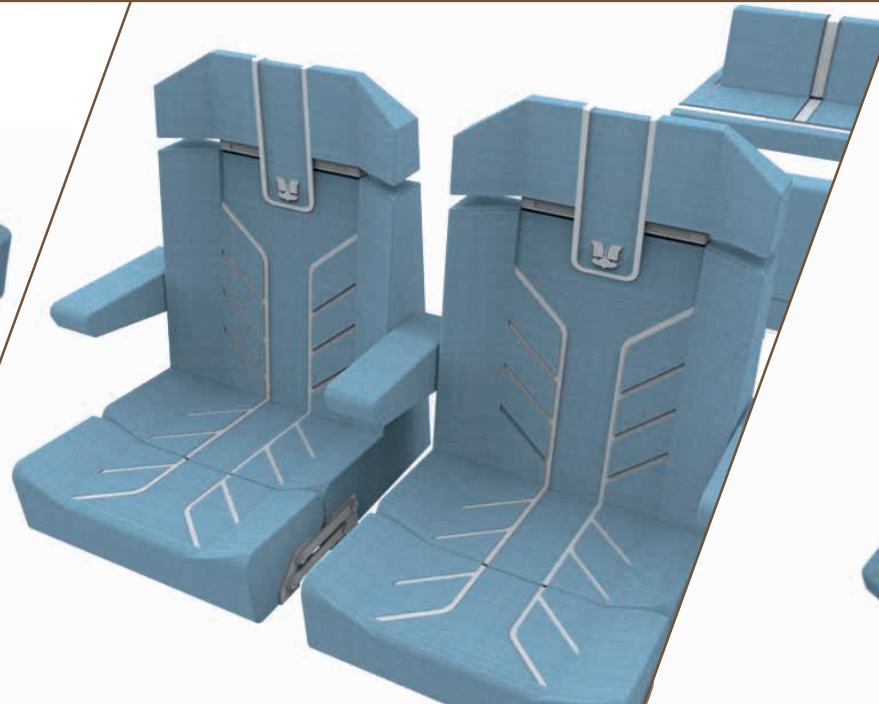
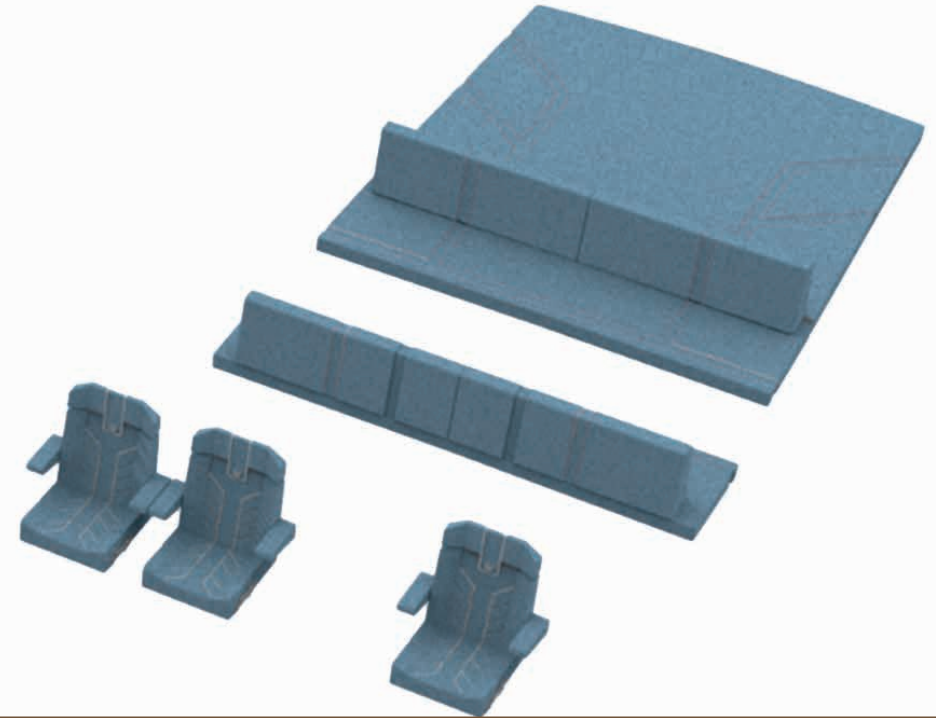


*exterior upholstery and helmsman
seats - Classic style with stitching in
Hitch (according to Hitch colour card)*

all models

upholstery and helmsman seats - exterior
hitch - sport style

FJORD 

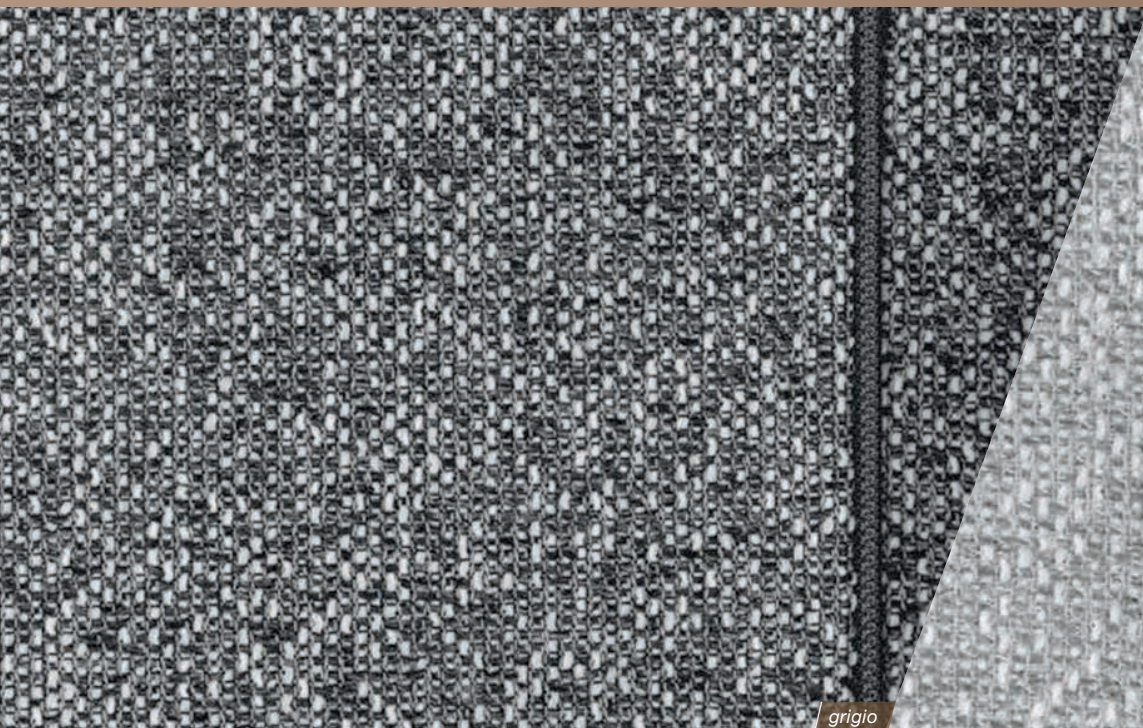


Exterior upholstery and helmsman seats - Sport style with bicolour material: main surface in Hitch (according to Hitch colour card) and ornament stripes in Hitch (according to Hitch colour card)

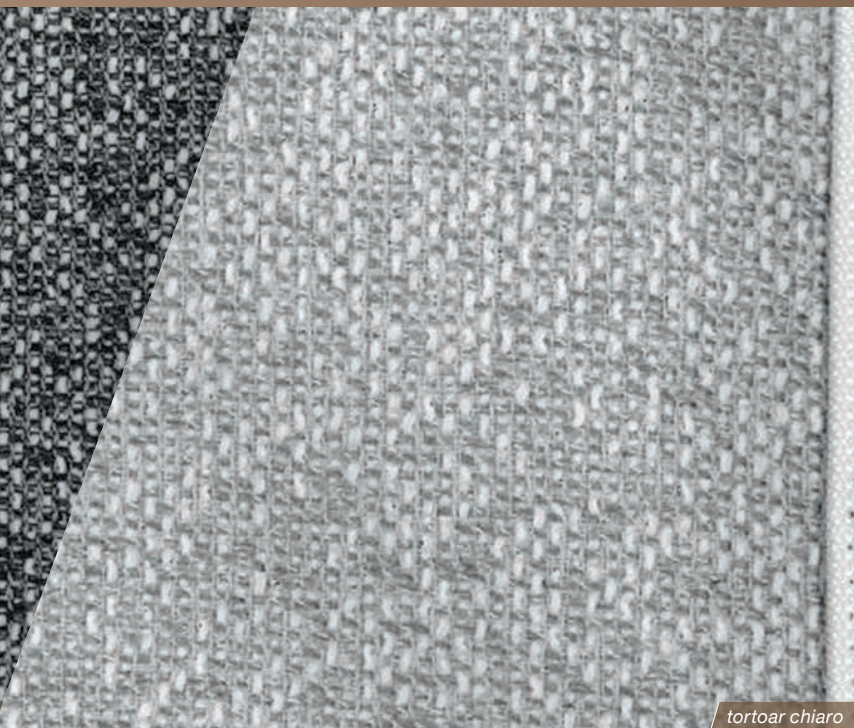
option all models

upholstery and helmsman seats - exterior
dolce vita

FJORD 



grigio



tortora chiaro



fredda

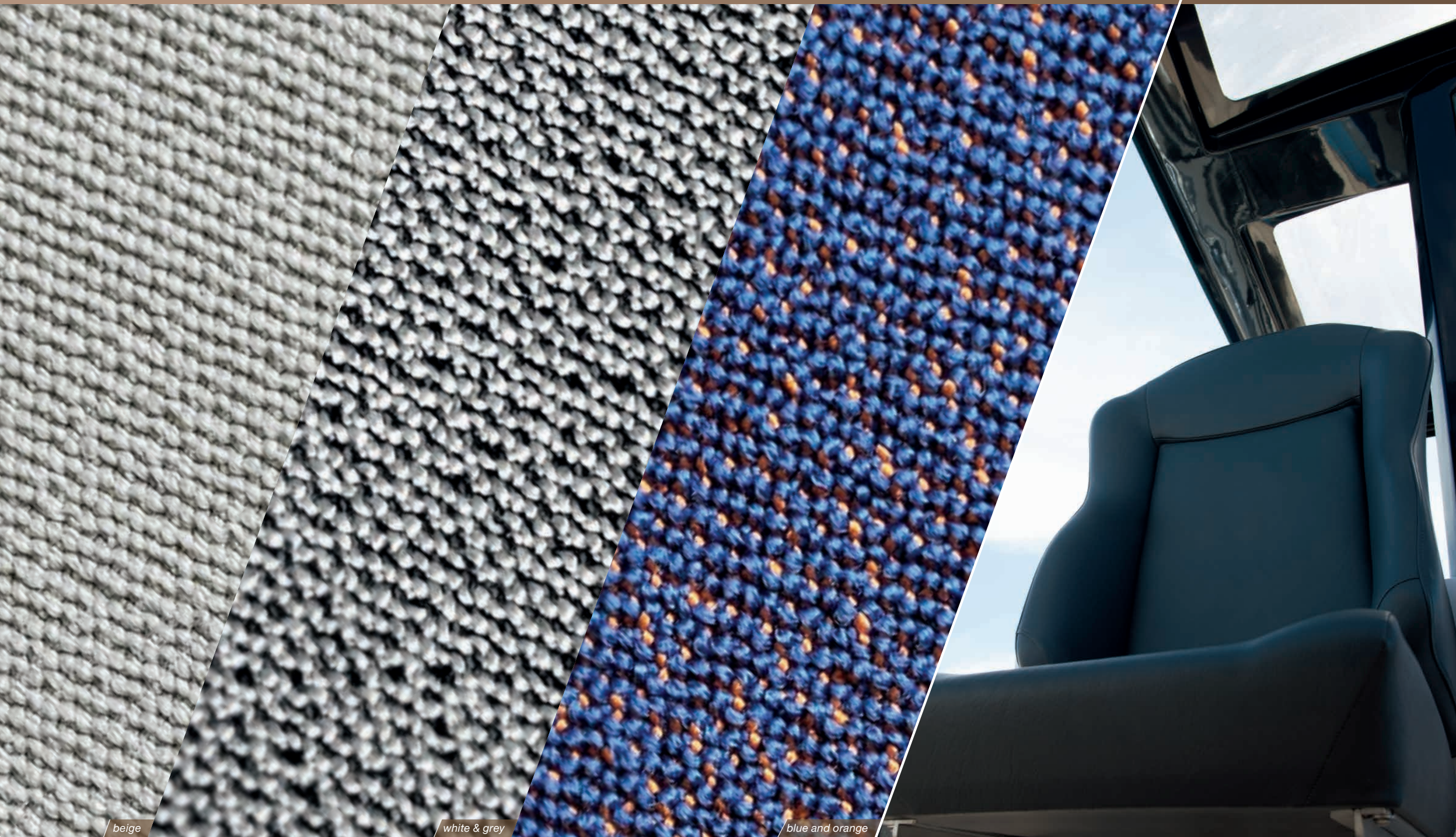


antracita



option for models
39 XL & 39 XP
41 XL & 41 XP
53 XL

upholstery package and helmsman seats - exterior and interior
ECO



beige

white & grey

blue and orange

all models

upholstery - interior
smooth

FJORD 

option taupe

option silver

option stone

option charcoal

option denim

Porto Bello cream
standard 39 XL & 39 XP
standard 41 XL & 41 XP
standard 53 XL
option 490 OPEN & 490 SPORT

option all models

upholstery - interior
dash



glacier

oyster

muscat

graphite

cliffside

option all models

upholstery - interior
padua



bronze

rock island

almond

black truffle

husky

option all models

*upholstery - interior
scoop leather*



clay

mud

ivory

amber

basalt

option for models
39 XL & 39 XP
41 XL & 41 XP
53 XL

*furniture – interior
wood*

FJORD 

Marine optimized real wood veneer from ALPI.



standard warm mahogany

option lisboa chestnut

option atlanta walnut

option milano oak

*warm mahogany and milano oak are available in satin finish.
53 XL: atlanta walnut and lisboa chestnut can be ordered in satin or high gloss finish.*

option for models
41 XL & 41 XP
53 XL

*furniture – interior
painted*



53 XL
41 XL & 41 XP
RAL 9003 signal white /
high gloss finish

41 XL & 41 XP
RAL 7047 telegrey /
high gloss finish



all models

flooring – interior
wood

FJORD 



standard pale acacia

option eternal oak

option basque oak

option noce nero

worktop in head - interior

FJORD 

all models



*standard 53 XL
standard 41 XL
standard 41 XP pebble grey*

option for all models

covers - exterior

FJORD 



light grey

dark grey

black

Covered mattress scheme:
porto bello, colour: cream

Interior furniture: high quality
marine plywood, colour: warm
mahogany

Decor elements on p side:
colour: black

Fiddle on port and starboard side:
colour: white

**Toilet door, vertical furniture
surface on p side and front of the
bed:** white HPL

Ceiling: fiberglass, colour: white

Floorboard: pale acacia



interior modes



39 XL & 39 XP

All MODES are represented as the architect selection of options in the pricelist. This selection is not binding. All mentioned option can be different but should be always selected one by one in the F39XL and F39XP pricelist.



ELEGANCE mode



CLASSIC mode



POLAR mode



SPORT mode

interior
Elegance mode

FJORD 

39 XL & 39 XP

Covered mattress:
XU1006 - Hitch, colour: Iceberg

**Furniture - horizontal surface on p
side and bulkhead on s side:**
XU5005 - covered Hitch, colour: Iceberg

Decor element on port side:
colour black (standard)

Fiddle on port and starboard side:
XU5116 - colour: Bronze

XU5301 Ceiling covered: horizontal and
vertical surface in Hitch - colour: Iceberg

Floorboard: XU6015 - synthetic teak,
colour: classic teak black



ELEGANCE mode

Covered mattress:
XU1006 - Hitch, colour: Iceberg

**Furniture - horizontal surface on p
side and bulkhead on s side:**
XU5005 - covered Hitch, colour: Iceberg

Decor element on port side:
colour black (standard)

Fiddle on port and starboard side:
XU5116 - colour: Black

XU5301 Ceiling covered: horizontal and
vertical surface in Hitch - colour: Iceberg

Floorboard: XU6014 - synthetic teak,
colour: classic teak white



Covered mattress:
XU1006 - Hitch, colour: Iceberg

Furniture - horizontal surface on p side and bulkhead on s side:
XU5005 - covered Hitch, colour: Iceberg

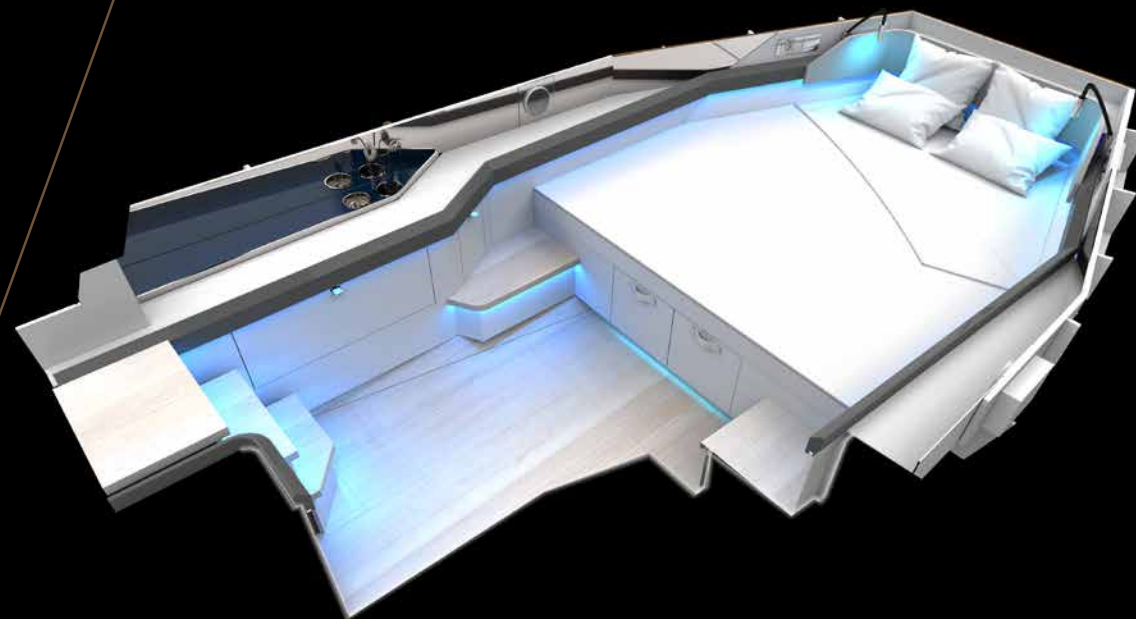
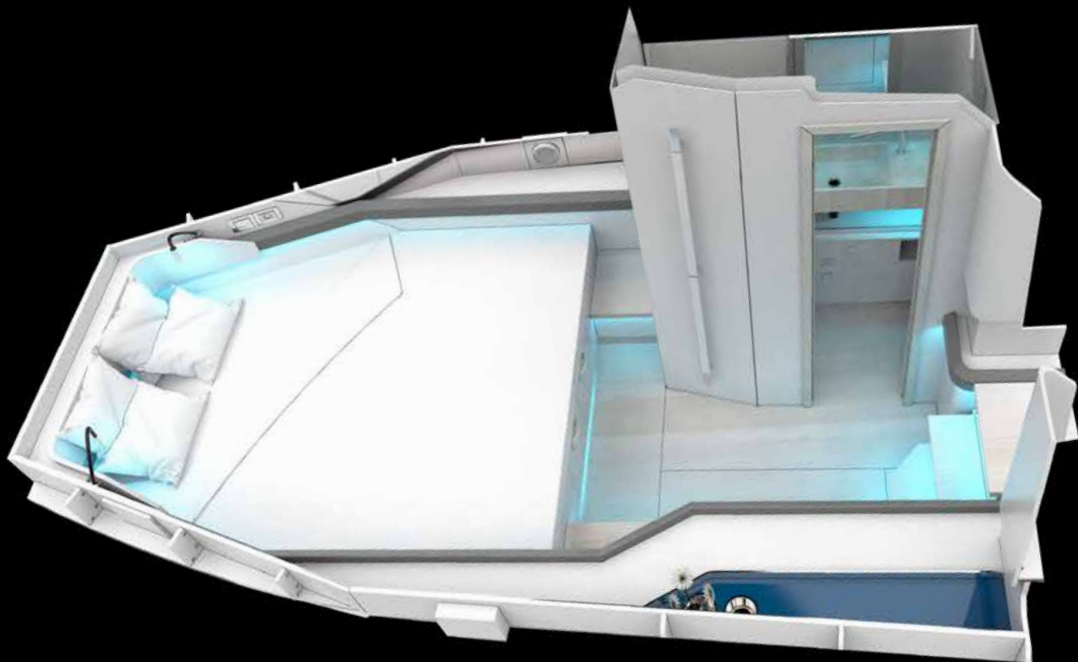
Decor elements on p side:
XU5111 - BLUE

Fiddle on port and starboard side:
XU5116 - colour: Grey

XU5301 Ceiling covered: horizontal and vertical surface in Hitch - colour: Iceberg

Floor: Standard - pale acacia

Indirect light under and behind bedhead, under the bedfront, beside the bed and in the toilet:
XD4054 - RGBW



Covered mattress:
XU1006 - Hitch, colour: Iceberg

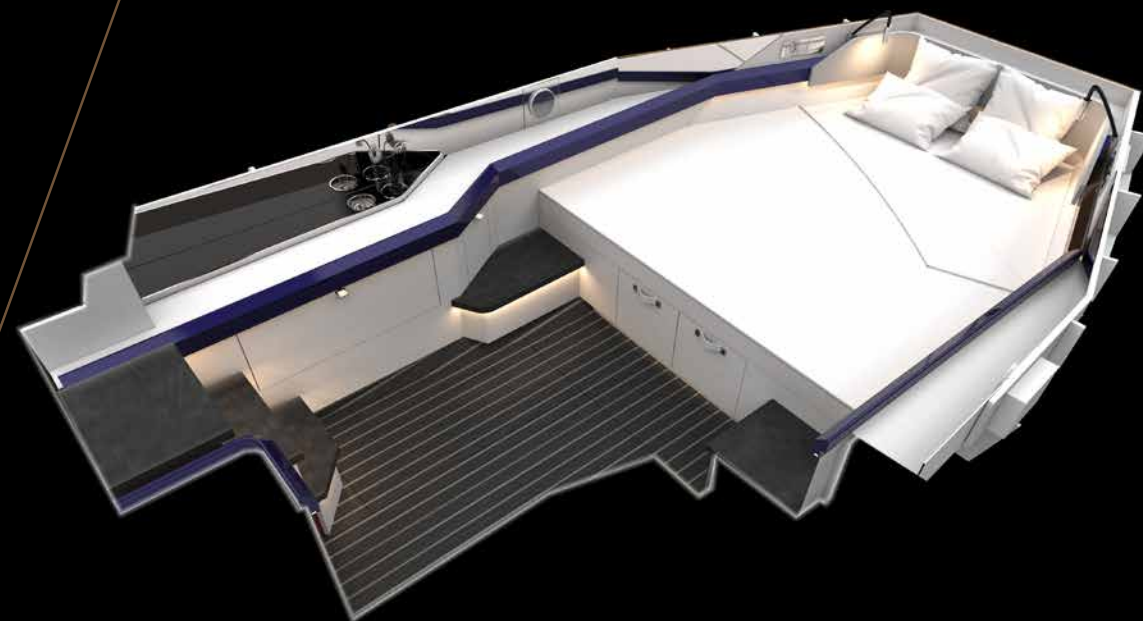
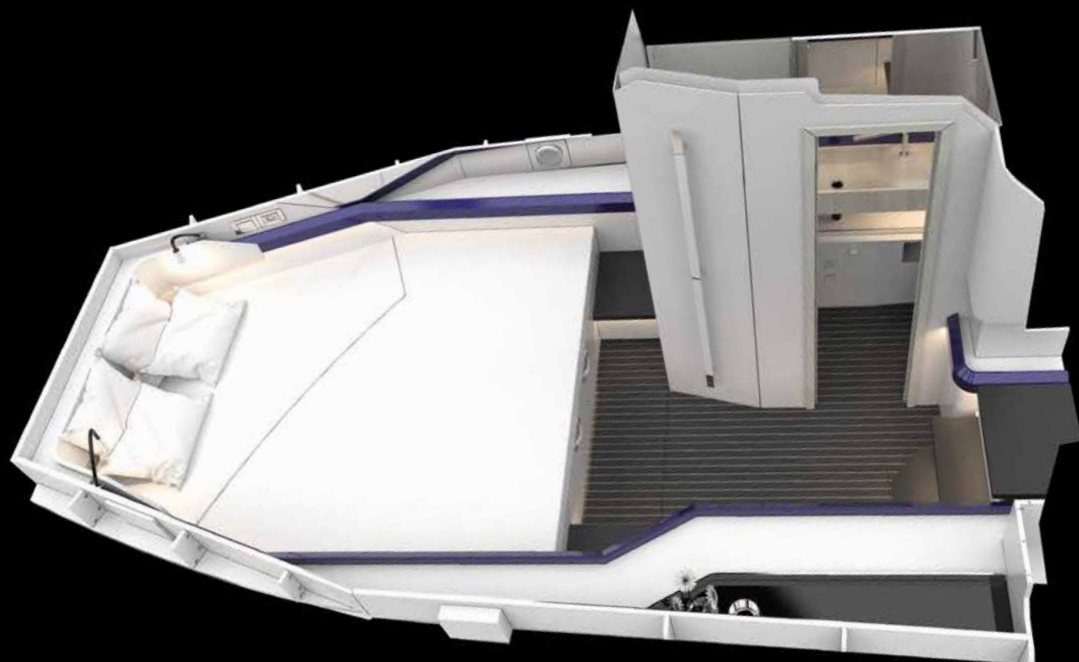
Furniture - horizontal surface on p side and bulkhead on s side:
XU5005 - covered Hitch, colour: Zinc

Decor element on port side:
colour black (standard)

Fiddle on port and starboard side:
XU5116 - colour: Prune

XU5301 Ceiling covered: horizontal and vertical surface in Hitch - colour: Iceberg

Floorboard: XU6016 - synthetic teak, colour: charcoal teak



Floorboard

standard
pale acacia

option synthetic teak
colour: charcoal teak

option synthetic teak
colour: classic teak white

option synthetic teak
colour: classic teak black

Furniture - horizontal
surface on p side and
bulkhead on s side

standard
wood warm mahogany

option
covered hitch, colour iceberg

option
covered hitch, colour zinc

Covered mattress

standard
porto bello, colour cream

option
hitch, colour iceberg

option
hitch, colour zinc

Fiddle on port and
starboard side

standard
colour white

option
colour black

option
colour grey

option
colour prune

option
colour bronze

Decor elements on
p side

standard
colour black

option
colour blue

interior standard

FJORD 

41 XL & 41 XP

Fiberglass decor part:
White gelcoat (standard)

Soft material horizontal surface around the bed in the owner cabin and vertical panels around the bed in owner and guest cabin:
Diamond snow (standard)

***Floor:** pale acacia (standard)

***Wood:** warm mahogany (standard)

***Fabric:** portobello (standard)

colour: cream (standard)



* All MODES are represented together with the architect selection of wood, floor and fabric. This selection is not binding. Wood floor and fabric can be different but should be always selected one by one in the F41XL and F41XP pricelist.

STANDARD

All MODES are represented together with the architect selection of wood, floor and fabric. This selection is not binding. Wood floor and fabric can be different but should be always selected one by one in the F41XL and F41XP pricelist.

Fiberglass decor part:
painted, color matching with Alexseal, palma blue metallic (optional)

Soft material horizontal surface around the bed in the owner cabin and vertical panels around the bed in owner and guest cabin: Diamond snow (standard)

*Floor: pale acacia (standard)

*Wood: lisboa chestnut (optional)

*Fabric: smooth – denim (optional)



POLAR mode

Fiberglass decor part:
painted, color matching with Alexseal, aztec gold metallic (optional)

Soft material horizontal surface around the bed in the owner cabin and vertical panels around the bed in owner and guest cabin: Mushroom (optional)

*Floor: pale acacia (standard)

*Wood: atlanta walnut (optional)

*Fabric: dash – cliffside (optional)



ELEGANCE mode

Fiberglass decor part:
painted, color matching with Alexseal, gold rush metallic (optional)

Soft material horizontal surface around the bed in the owner cabin and vertical panels around the bed in owner and guest cabin: Diamond carbon (optional)

*Floor: basque oak (optional)

*Wood: lisboa chestnut (optional)

*Fabric: smooth – charcoal (optional)



SPORT CHIC mode

Fiberglass decor part:
painted, color matching with Alexseal, dark black metallic (optional)

Soft material horizontal surface around the bed in the owner cabin and vertical panels around the bed in owner and guest cabin: Diamond snow (standard)

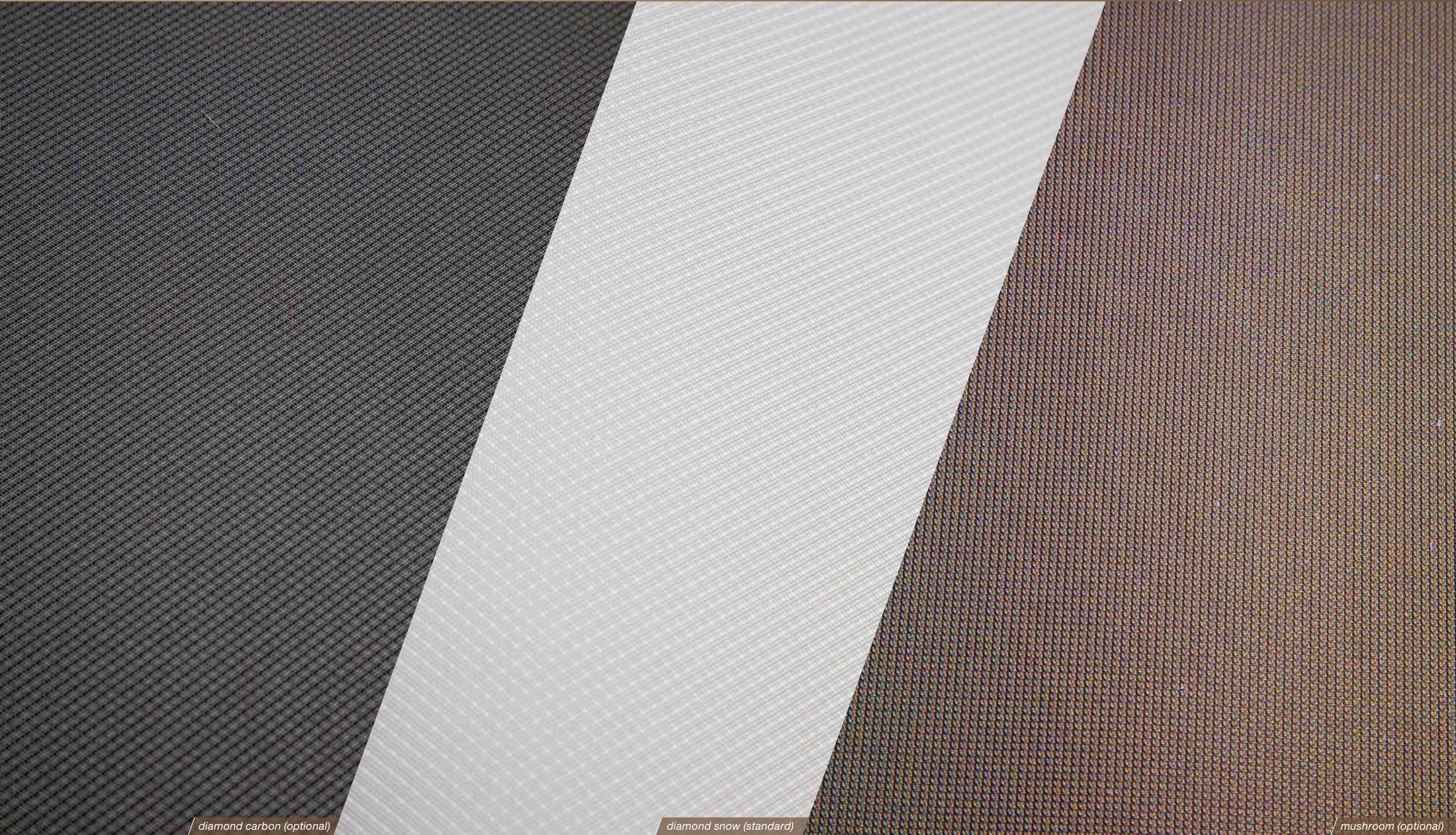
*Floor: noce nero (optional)

*Wood: milano oak (optional)

*Fabric: smooth – Porto Bello cream (optional)



CLASSIC mode



diamond carbon (optional)

diamond snow (standard)

mushroom (optional)

490 OPEN & 490 SPORT

interior standard

FJORD 



STANDARD

490 OPEN & 490 SPORT

Marine optimized real wood veneer from ALPI.

furniture - interior
wood



option teak



option lisboa chestnut



option atlanta walnut



standard milano oak



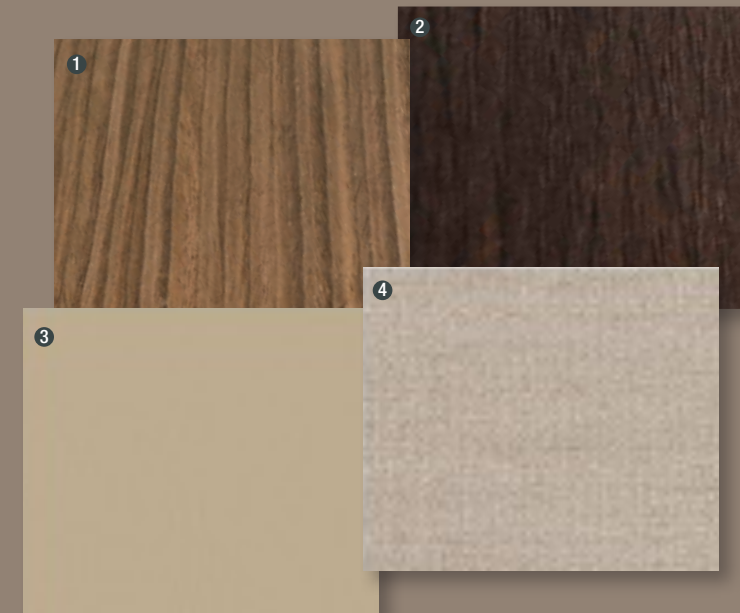
Style 1 – standard

- 1 Wood Bulkhead:**
Milano Oak
- 2 Wood Floor:**
Pale Acadia
- 3 Leather bed structure and pouch:**
Artificial leather color: grey
- 4 Cover material (on dedicated furniture areas in master and guest cabin):**
Cover material: amber



Style 2

- 1 Wood Bulkhead:**
Atlanta Walnut
- 2 Wood Floor:**
Noce nero
- 3 Leather bed structure and pouch:**
Artificial leather color: beige
- 4 Cover material (on dedicated furniture areas in master and guest cabin):**
Cover material: beige



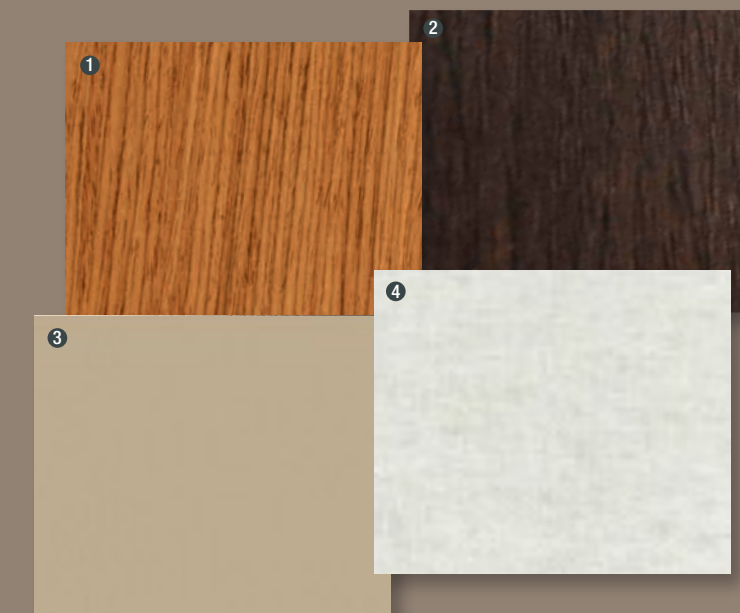
Style 3

- 1 Wood Bulkhead:**
Lisboa Chestnut
- 2 Wood Floor:**
Basque Oak
- 3 Leather bed structure and pouch:**
Artificial leather color: grey
- 4 Cover material (on dedicated furniture areas in master and guest cabin):**
Cover material: blue



Style 4

- 1 Wood Bulkhead:**
Teak
- 2 Wood Floor:**
Noce nero
- 3 Leather bed structure and pouch:**
Artificial leather color: beige
- 4 Cover material (on dedicated furniture areas in master and guest cabin):**
Cover material: ivory



www.fjordboats.com

 **FJORD**

